




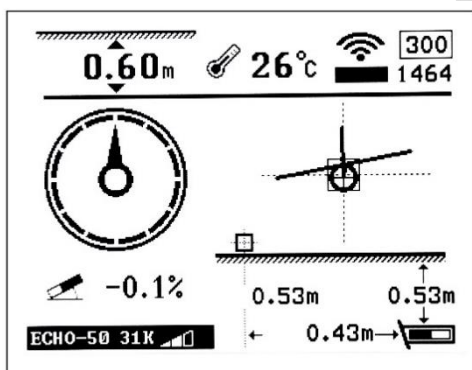


# Getting Started MAG6/MAG8

## Reference Booklet - Locator

### Locator Attributes

-  Power key: Press and hold to turn on or off or tap to turn back light on or off
-  UP key: Move to previous cursor selection
-  Down key: Move to next cursor selection
-  Confirm key: Tap to confirm cursor selection. Press and hold to enter secondary page
-  Setup key: Tap to enter calibration page/return to main page; Press and hold to enter setup page



Transmitter Clock Position



ECHO-50 31K

Transmitter model, operating frequency and mode

26°C

Transmitter temperature (Flashing indicates transmitter temperature is rising)

0.60m

Depth/Slant distance between transmitter and receiver

300

Signal to Noise Ratio



Transmitter signal strength

-0.1%

Transmitter pitch



Transmitter battery status

0.43m

Estimated horizontal distance between transmitter and receiver

0.53m

Estimated transmitter depth

0.53m

Vertical distance between receiver and transmitter

### Menu functions

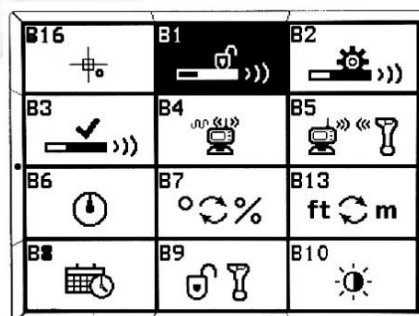
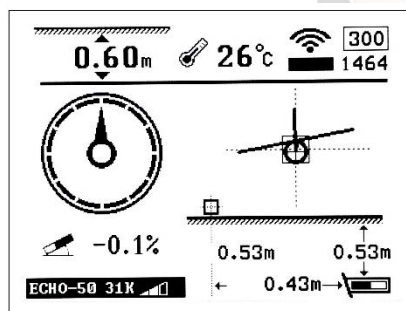
B16	B1	B2
B3	B4	B5
B6	B7	B13
B8	B9	B10

- B1: Transmitter activation
- B2: Transmitter pairing
- B3: Receiver settings with Transmitter
- B4: Telemetry channel selection for receiver
- B5: Receiver and display pairing
- B6: Roll calibration/offset
- B7: Pitch unit selection- Degree/Percentage
- B8: Time & Date setting
- B9: System lock/unlock
- B10: Brightness control
- B13: Depth unit selection- Feet/Meter
- B16: Speed control of the ball



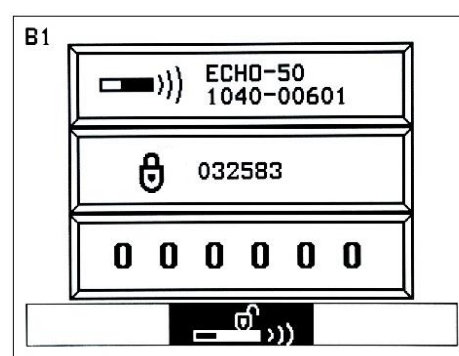
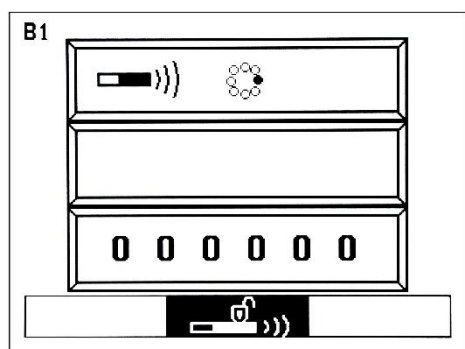
**Warning:** Transmitter Activation to be completed within 10 minutes after batteries have been placed in the transmitter.

## Transmitter Activation



1. Press and hold to enter setup page.

2. Tap to reach B1 icon for transmitter activation.



3. Tap to enter B1 page.

4. 1040-00601 is the transmitter identification number and 032583 is the prompt code in the diagram. Use and to input password in the 3<sup>rd</sup> row, tap to confirm activation after password is entered.

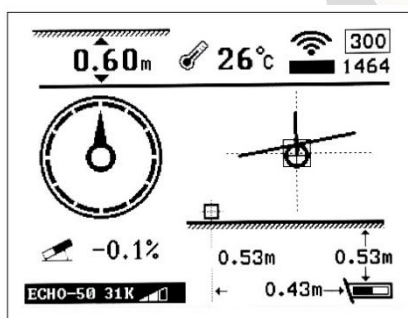


**Note:** Send the transmitter identification number and the prompt code to the dealer. The dealer will give you an activation password.



**Note:** For best results pair the transmitter in all ten frequencies by repeating the steps in transmitter setting before proceeding to depth forecast.

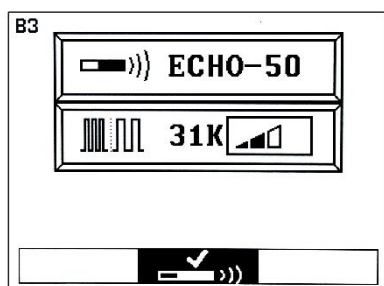
## Transmitter Selection



B16	B1	B2
B3	B4	B5
B6	B7	B13
B8	B9	B10

1. Press and hold to enter setup page.

2. Tap to reach B3 icon.



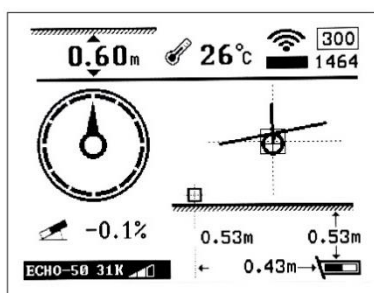
3. Tap to enter receiver setting page. Tap or to reach transmitter model.

Tap to enter Transmitter frequency and Power.

Tap or to set desired frequency and mode.

## Transmitter Setting (Pairing)

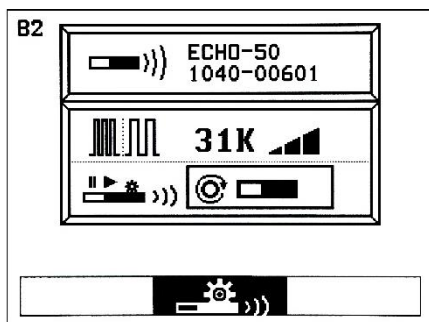
**Warning:** Insert the battery inside the transmitter before proceeding to transmitter setting.



B16	B1	B2
B3	B4	B5
B6	B7	B13
B8	B9	B10

1. Press and hold to enter setup page.

2. Tap to reach B2 icon.

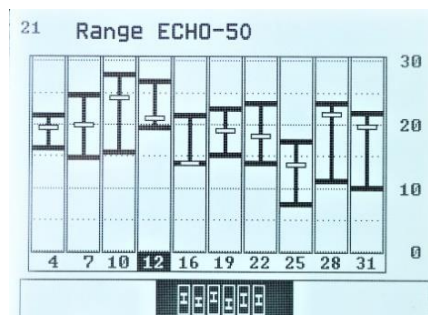
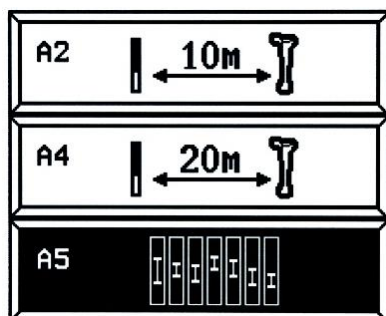


3. Tap to enter transmitter settings page. The receiver and Echo transmitter will automatically pair. Then tap or and to select its frequency, power mode and wake up mode.



**Warning: Transmitter should not contain battery while using Depth forecast.**

## Depth Forecast



1. Tap to enter calibration page. Tap to reach A5 icon.

2. Tap to enter depth prediction page.



**Note:** Before proceeding for calibration, please ensure that the surrounding is free from interference e.g. parks, open area.

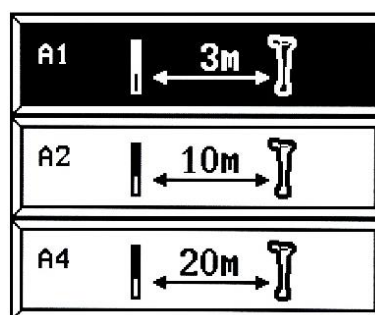
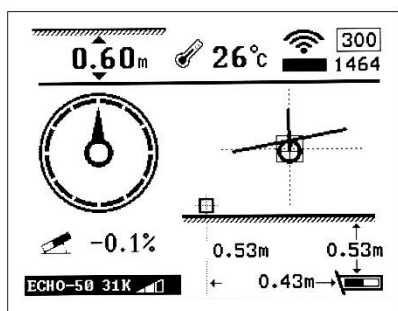
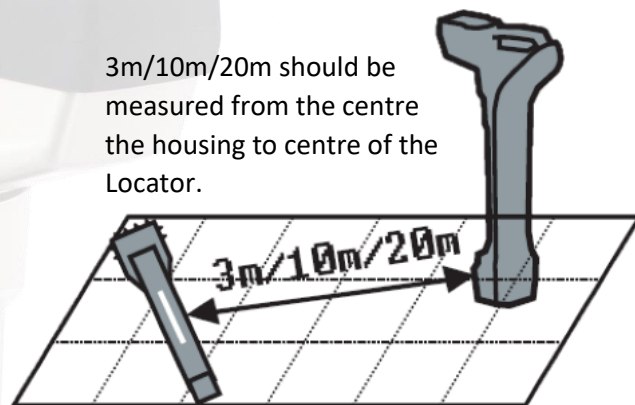


**Warning:** Even if the transmitter's roll, pitch, battery status and temperature are displayed correctly, calibration may not be reliable due to a distorted magnetic field.

## Depth Calibration

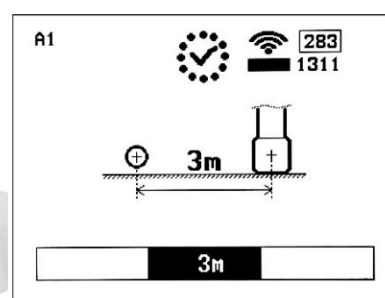
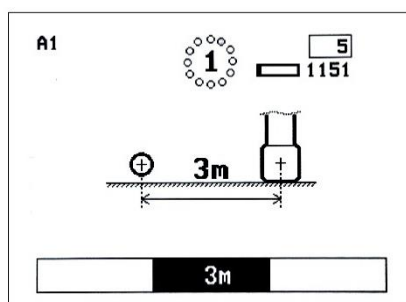
1. Ensure that the transmitter is working properly by verifying the data on receiver and place the transmitter in the housing.
2. Keep the housing containing the transmitter away from the interference.
3. Keep the transmitter at 3m/10m/20m (as per requirement) away from the receiver as shown in figure.

3m/10m/20m should be measured from the centre the housing to centre of the Locator.



4. Tap to enter calibration page.

5. Tap or to reach 3m/10/20m calibration and tap to confirm.



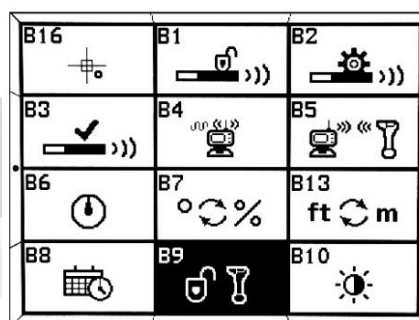
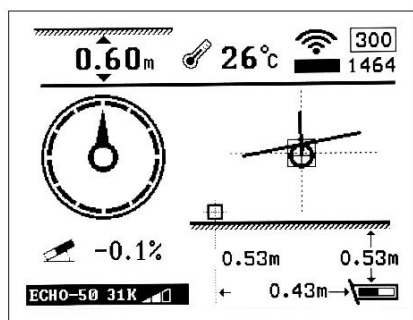
6. Tap two times to start 3m/10/20m calibration and wait for calibration to complete.

7. Calibration complete.



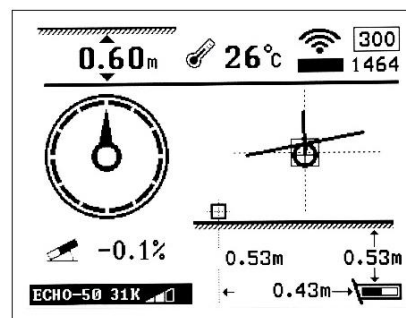
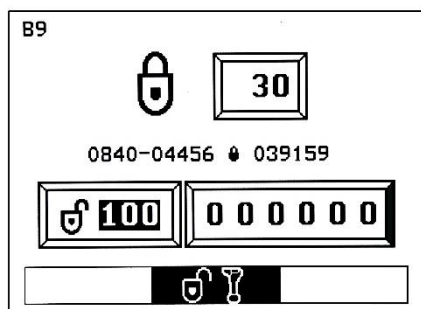


## System Unlock



1. Press and hold to enter setup page.

2. Tap to reach B9 icon.



3. Tap to enter system unlock page.

4. Tap to return to main page.

Tap or and to input password.



**Note:** To get the password please contact your dealer.

501 & 506, 5<sup>th</sup> Floor, The Pinnacle Business Tower, Shooting Range Road,  
Surajkund, Faridabad, Haryana, India – 121009

Ph: +91 129 487 1020

Email: [india@undergroundmagnetics.com](mailto:india@undergroundmagnetics.com)

[www.undergroundmagnetics.co.in](http://www.undergroundmagnetics.co.in)